

Eleven Hot Titles! This Shouldn't Hurt...Much.



Club 3DO: Station Invasion™



Flying Nightmares™



PaTaank™



MEGARACE™



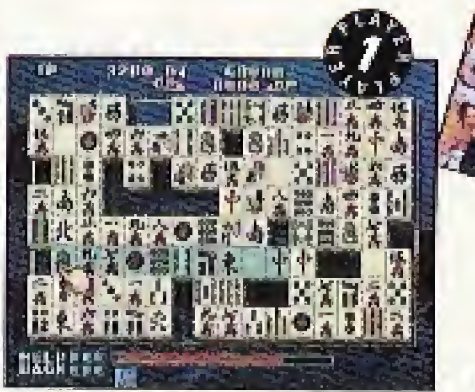
SPECIAL BONUS
INCLUDES 3DO
STORAGE MANAGER
UTILITY



Slam 'n Jam '95™



Return Fire™



Shanghai: Triple Threat™



7 90561 01843 8

3DO, the 3DO logos, Interactive Multiplayer, and Station Invasion are trademarks and/or registered trademarks of The 3DO Company. All other brand or product names are trademarks or registered trademarks of their respective holders. © 1995 The 3DO Company.



GEX™



PO'ed™



Slopestyle™



Wing Commander® III:
Heart of the Tiger™

T H E
3DO™
INTERACTIVE
SAMPLER
CD
#3

TEASE YOURSELF with these samples of eleven brain-frying 3DO titles. Hunt aliens in a three-dimensional city in *PO'ed*. Scramble a British Harrier jet in *Flying Nightmares*. Search for the golden tile in *Shanghai: Triple-Threat*. Break formation with your wingmen to attack Kilrathi fighters in *Wing Commander III: Heart of the Tiger*. And when you're done, you can make your way back to the store for the complete titles.

SPECIAL BONUS

Includes 3DO
Storage Manager Utility
by The 3DO Company

The 3DO Interactive Multiplayer system saves games, high scores, title data files, and Audio CD programs in its built-in storage area. Over time, this area can become full. Use the 3DO Storage Manager to clean up your storage memory from time to time.

End User Notice

THE 3DO COMPANY SHALL NOT BE LIABLE TO THE END USER FOR ANY LOSS OF DATA, LOST PROFITS, COST OF SUBSTITUTE GOODS OR OTHER CONSEQUENTIAL, INCIDENTAL, SPECIAL, PUNITIVE, OR OTHER DAMAGES OF ANY KIND ARISING OUT OF THE USE OF OR INABILITY TO USE THE SOFTWARE.

THE 3DO COMPANY MAKES NO WARRANTIES, EXPRESS, IMPLIED OR STATUTORY, REGARDING THE SOFTWARE, INCLUDING WITHOUT LIMITATION THE IMPLIED WARRANTIES OF MERCHANTABILITY AND FITNESS FOR ANY PARTICULAR PURPOSE, OR ANY EQUIVALENT WARRANTIES UNDER THE LAWS OF ANY JURISDICTION.

DO NOT USE A FRONT OR REAR PROJECTION TELEVISION WITH THIS PRODUCT. YOUR PROJECTION TELEVISION SCREEN MAY BE PERMANENTLY DAMAGED IF STATIONARY SCENES OR PATTERNS ARE PLAYED ON YOUR PROJECTION TELEVISION. SIMILAR DAMAGE MAY OCCUR IF YOU PLACE THIS PRODUCT ON HOLD OR PAUSE. IF YOU USE YOUR PROJECTION TELEVISION WITH THIS PRODUCT, NEITHER THE 3DO COMPANY NOR THE THIRD PARTY PUBLISHERS WHOSE SOFTWARE IS FEATURED ON THIS DISC WILL BE LIABLE FOR ANY RESULTING DAMAGE. THIS SITUATION IS NOT CAUSED BY A DEFECT IN THIS PRODUCT OR THE 3DO SYSTEM; OTHER FIXED OR REPETITIVE IMAGES MAY CAUSE SIMILAR DAMAGE TO A PROJECTION TELEVISION. PLEASE CONTACT YOUR TV MANUFACTURER FOR FURTHER INFORMATION.

THE EXECUTION OF SOFTWARE WITH THE 3DO SYSTEM INVOLVES THE USE OF PATENT RIGHTS, GRANTED OR APPLIED FOR, IN CERTAIN COUNTRIES. A PURCHASER OF THE 3DO SYSTEM IS LICENSED TO USE SUCH PATENT RIGHTS WITH SOFTWARE LICENSED BY THE 3DO COMPANY. NO LICENSE, IMPLIED OR OTHERWISE, IS GRANTED FOR THE EXECUTION OF OTHER SOFTWARE.



3DO, the 3DO logos, Interactive Multiplayer, and Station Invasion are trademarks and/or registered trademarks of The 3DO Company. All other brand or product names are trademarks or registered trademarks of their respective holders. © 1995 The 3DO Company.

3DOTM INTERACTIVE SAMPLER #3 INSTRUCTION CARD

Club 3DO: Station Invasion™

by Studio 3DO

Select a slot and enter your name. Press A to select a letter, B to delete a letter, and C to finish and accept name. Use the D-Pad and press A to select a show to produce. Press A to start the game.

Club 3DO: Station Invasion has 10 different challenges that test your visual, verbal, and mathematical knowledge against the clock.

General Controls for the Challenges

D-Pad – Move around or scroll between selections

A Button – Select a highlighted item

C – Confirm or finish a challenge
A, B, & C – For multiple choice questions

Flying Nightmares™

by Domark Software, Inc.

A – Fire

B – Toggle weapon

C – Flare & Chaff

L-Shift – Camera view

R-Shift – Toggle outside/
inside view

D-Pad – Move view Left/Right
Up/Down (This only works when you're outside the plane)

X – Stop

P – Pause

Enjoy firing with different weapons and changing your view, as your plane flies you on a mission.

GEX™ by Crystal Dynamics

Enjoy this non-interactive sample from *GEX*. The shipping title will be fully interactive.

MEGARACE™ by Mindscape

Select a language for subtitles, if desired.

Press A to skip ahead past video segments

At the select car screen, you will have one vehicle available in this demo version. Press A to see a preview of the vehicle.

Select the green button to set your difficulty level. Select the yellow button to load or save a game in progress, to turn off sounds, or to adjust game controls. Select the blue button to view the MEGARACE Hall of Fame. Select the red button to preview the track—press and hold the B button to preview the track at slow speeds.

When you are ready to race, press the P button.

RACE CONTROLS:

A – Accelerate

B – Fire Weapon

C – Brake

PaTaank™ by PF. Magic

D-Pad Left/Right – Rotates puck left/right 90 degrees

Hold A – Activate magnetos

B – Thrust puck forward

C – Cycle lane lights and target lights

L-Shift/R-Shift – Nudges puck left/right

PO'ed™ by Any Channel

Left/Right-Shift – Move Left/Right

D-Pad Left/Right – Turn Left/Right

D-Pad Up/Down – Move forward/backward

B – Fire Weapon

C – Toggle Laser/Rockets

P – Toggle On foot/Jetpack

On Foot:

A – Jump

Jetpack:

Hold A – Thrust

Release A – Hover

Tap A – Descent

Return Fire™

by Prolific Publishing

Objective: Locate and destroy your enemy's bunker, then return with your jeep to steal his/her flag and bring it back to your bunker.

One Player Mode

To begin, select one of your four vehicles from your underground bunker and activate it by pressing the A Button. Select between a helicopter, a tank, an armored surface vehicle (ASV), or a jeep.

D-Pad Up – Move forward

D-Pad Down – Move reverse

D-Pad L or R – Steer or turn left or right (except 'copter: slide left or right)

L/R-Shift – Slide left or right (except 'copter: turn left or right)

A – Fire straight forward

B – Lob overhead shot forward (except 'copter: shoot downward)

Two Player Mode

Enjoy this non-interactive 2-player sample from *Return Fire*. The software's built-in artificial intelligence is playing both sides as a demonstration of 2-player gameplay.

Shanghai: Triple Threat™

by Activision

D-Pad – Move cursor, highlight option

A – Select tile or option

B – Deselect tile

C – Display options menu

P – Load game

D-Pad L/R – Super speed cursor

D-Pad + A – Drag tile

Slam 'n Jam '95™

by Crystal Dynamics

Enjoy this non-interactive sample from *Slam 'n Jam '95*. The shipping title will be fully interactive.

Slopestyle™

by L3 Interactive

Use the directional pad to highlight the lesson block face you wish to preview, then press A for an intro or press Play for a full lesson. Use the directional pad to scan forward or backward through a video sequence. Press Play/Pause to alternately freeze and continue video playback. Press both shift buttons to toggle to Transportext.™

Wing Commander® III: Heart of the Tiger™

by ORIGIN Systems

A – Fire Missiles

C – Fire Guns

L-Shift + A – Switch missiles

L-Shift + C – Switch guns

R-Shift + A – Autopilot

R-Shift + C – Cycle targets

B + D-Pad L/R – Roll left or right

B + D-Pad Up/Down – Change Speed

To communicate in flight, press Play with the Directional Pad. P + D-Pad Up will order your wingmen to break and attack. P + D-Pad Right to taunt your enemy. P + D-Pad Down to request a landing on the Victory. On the Victory, the Shift keys cycle between activation points.

The 3DO Storage Manager by The 3DO Company

At the main menu screen, press Stop to bring up the Storage Manager screen and follow the easy instructions depicted. Use the D-Pad to move up and down in the list of items stored in your system's memory. Press A to remove an item. Press C for additional help.